

# Prepping The House and Your People Before An Acquired Structure Burn



# Presenter

- Paul Hasenmeier
  - Huron (OH) Fire Department



# OBJECTIVES

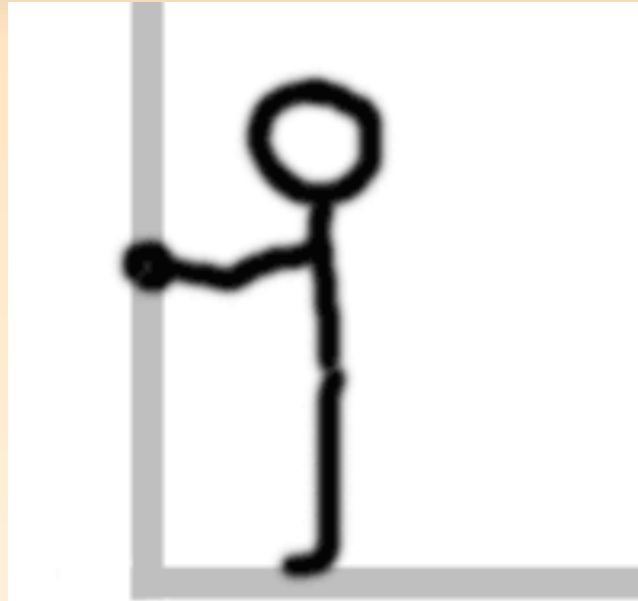
- Understand what it takes to prep an acquired structure.
- Learn tips to make prep day go smoothly.
- Recognize the hazards of prepping an acquired structure.
- Understand the strengths of volunteer, student, and paid laborers.
- Follow NFPA 1403.

# Live Fire Training

- Fires in structures present complex and dynamic challenges.
- These conditions require a high level of situational awareness and decision making skill.
- Live fire training presents us all with the same type of hazards found at real emergencies, but under different conditions.

**IT'S TRAINING!**

**WE MUST GO HOME!**



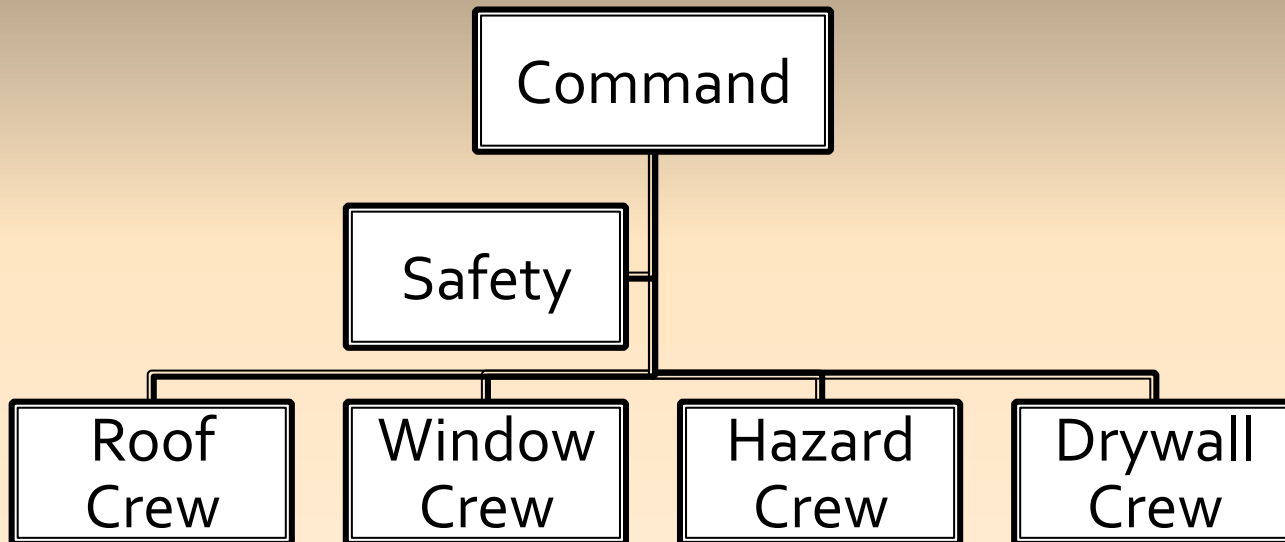
1403

NFPA 1403  
Standard on  
Live Fire Training  
Evolutions  
2007 Edition



NFPA, 1 Batterymarch Park, Quincy, MA 02169-7471  
An International Codes and Standards Organization

# USE THE ICS!



# Burn Prep Labor

- Firefighters
- Structure Owner
- Students
- Volunteers
- Paid Contractors
  - Inspections



# Fix interior structural deficiencies











# Re-Drywall – All or Parts









# Make Exits Safe



# Eliminate Overgrown Landscaping That Blocks Exits





# Window removal



Replace with drywall



# Make a safe room



# Safe room characteristics

- Provides safe haven for ignition instructors
- Provides area for interior safety hose line
- Provides area for instructor tool storage
- Provides pre-established attic access
- Provides clear path  
emergency egress





# Safe room attic access



**Insert attic ladder**





9

C

10

10

10

10

0

Safe Room

2

6



SPR  
5000

57

D 66

88

88

ACS  
#14  
Attic  
Insulation



# Roof vents



# Remove chimneys







# Remove Roofing Materials







4

2

1

10

B

77



# Rain Could Ruin Your Burn



Cover with plastic  
until burn day

# Exterior labeling



# Burn order



# Sides



# Interior features



# Interior labeling





# Interior labeling cont.



# Interior labeling cont.



# Water Supply



# Water Supply

- Reliability should be considered when determining what constitutes valid separate sources.
- Trying to prevent simultaneous loss of attack and back up lines in the event of a pump or water supply failure.

# Water Supply





# Water Supply

- If on a public water system, two pumpers on two different hydrants should be used.
- If at a fixed draft site, two pumpers at the same source are appropriate.
- If using portable tanks or tankers, two separate pumpers should be used.
- Allowed to mix: i.e. hydrant and portable tank
- Minimum hand-line flow is 95 gpm

# Hydrants vs. No Hydrants





# Prepare for Exposure Protection





# Fuel Materials

- Must have known burning characteristics
- Can not use pressure treated wood, rubber, plastic, straw or hay treated with pesticides
- No flammable or combustible liquids in an acquired structure











# Predict Fire Behavior

- Burn pile placement
  - Avoid windows – Why?
- Design of burn pile
- Amount of fuel
- Ceiling characteristics & height
- Small rooms vs. big rooms
- Natural ventilation





FIREFIGHTER

FVFD

4

LIEUTENANT



# Post Flashover



**NIST**

**National Institute of Standards  
and Technology**

**Technology Administration  
U.S. Department of Commerce**



# Basement Burn or Not?





# Pre-Burn Safety Briefing





# No Surprises

- Each firefighter should do a walk-through
- Crew integrity
- Instructor integrity
- Emergency notification
- Clear objectives





GREENWICH  
FIRE EPT

D BAICAN

T.C.P.

S. FISHER

FA  
FR

HOLLARD  
FIRE DEPT

NEW HAVEN

# Have Fun



# Train Hard!



# Be Safe!

# Take Care of Each Other!

